

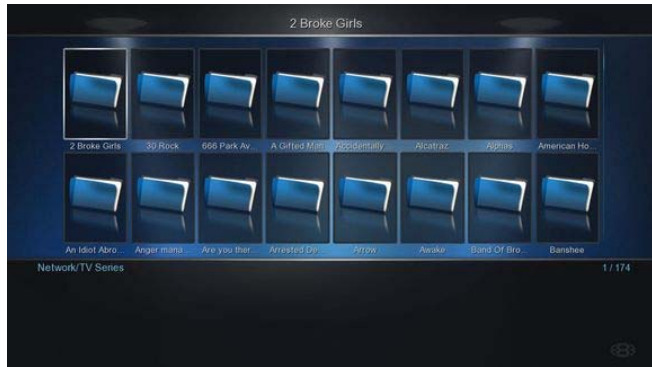


tvrename

MEDE8ER

TRANSFORM YOUR MEDE8ER TV WALL

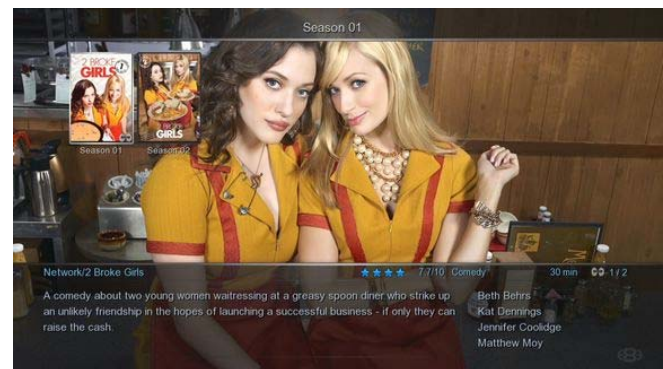
FROM THIS:



TO THIS:



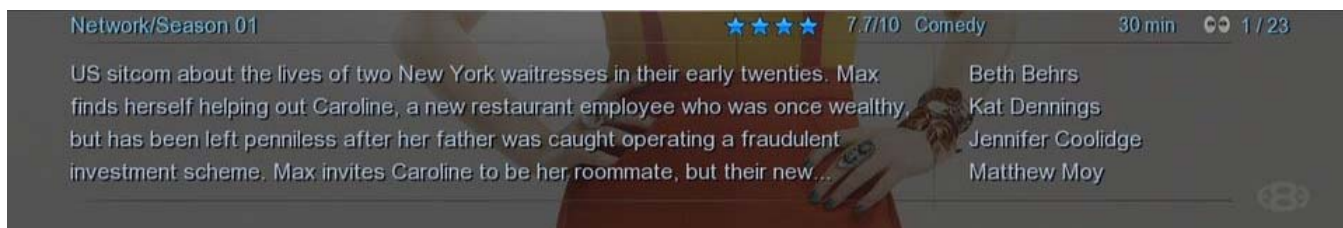
LIBRARY VIEW



SHOW VIEW



SEASON VIEW



FULL SYNOPSIS AND INFO

Acknowledgement

Thank you to **Sstteevvee** – man behind TVRename and **Mark Summerville** for their assistance, contribution and help in further developing this app for Mede8er.

Big thank you to the Mede8er staff for incorporating changes in their firmware to further enhance this application and the TV Wall.

Thanks to all the folks on the Mede8er forum for testing and input.

About TVrename

The App really brings out the best in your TV Wall quickly and easily.

It scans your series folder(s) and creates Mede8er compatible files required for your TV Wall.

The app also points out missing episodes and what's just released thereby ensuring your library can be kept up to date. This program has grown into a one click solution for Mede8er's TV Wall.

Files created by TVrename for Mede8er:

Series info (.xml file)

Episode Info (.xml file)

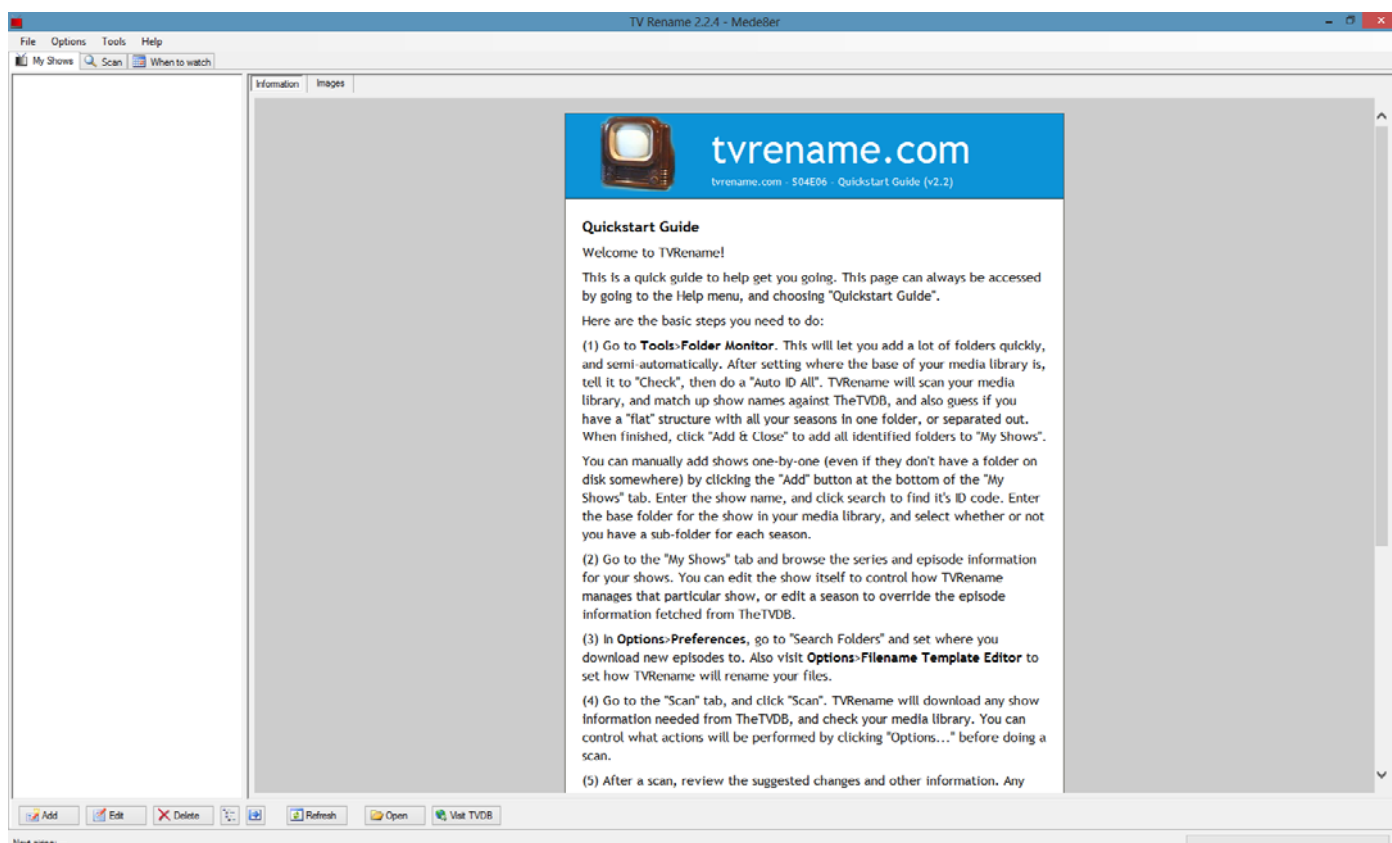
Fanart.jpg

Folder.jpg (Show image)

Folder.jpg (Season specific image)

Episode thumbs or Series.jpg

View.xml (displaying episode thumbs correctly)



Startup screen when opened for the first time.

Getting started:

Download the setup file and install.

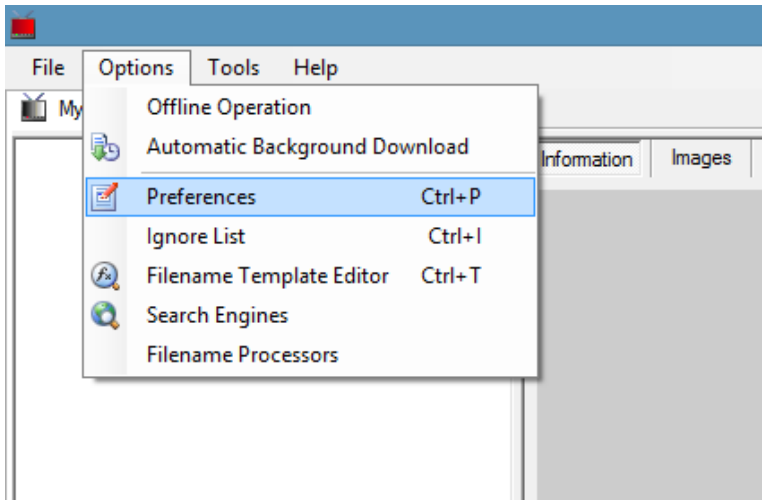
Start the program.....

First you need to do some settings.

Delete mede8er.db file in your TV Series directory, the Mede8er TV Wall does not get Scanned..EVER!

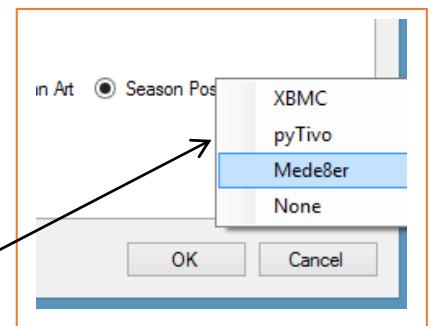
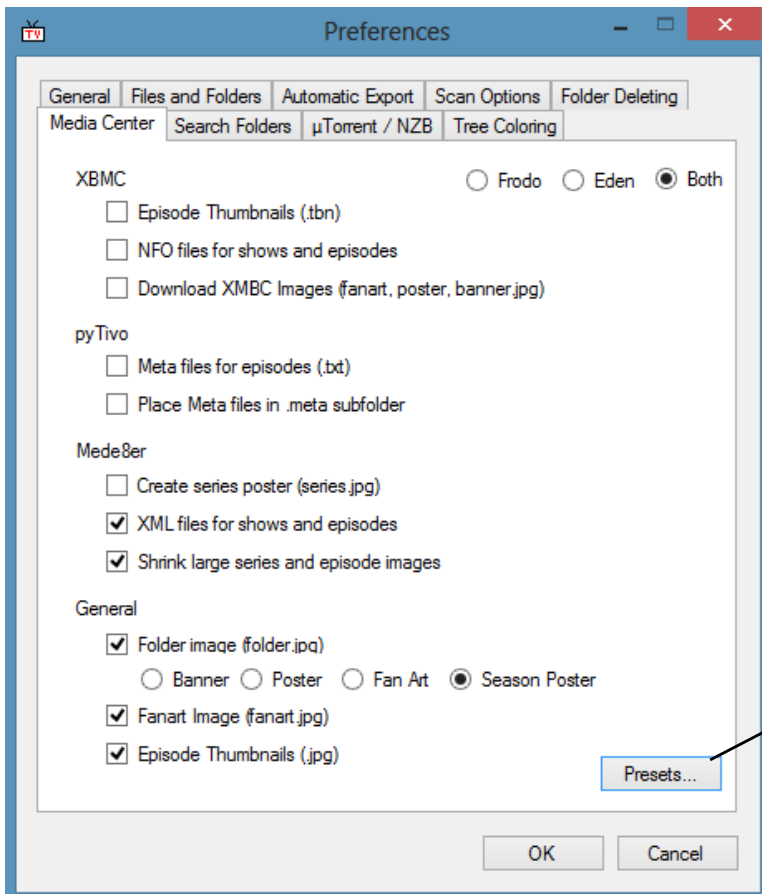
Preferences:

Setting up Preferences: (Ctrl + P)....just a few things to set here (**This only needs to be done once**)



From the File menu > select Options > Preferences

Choose Mede8er as the default preset.



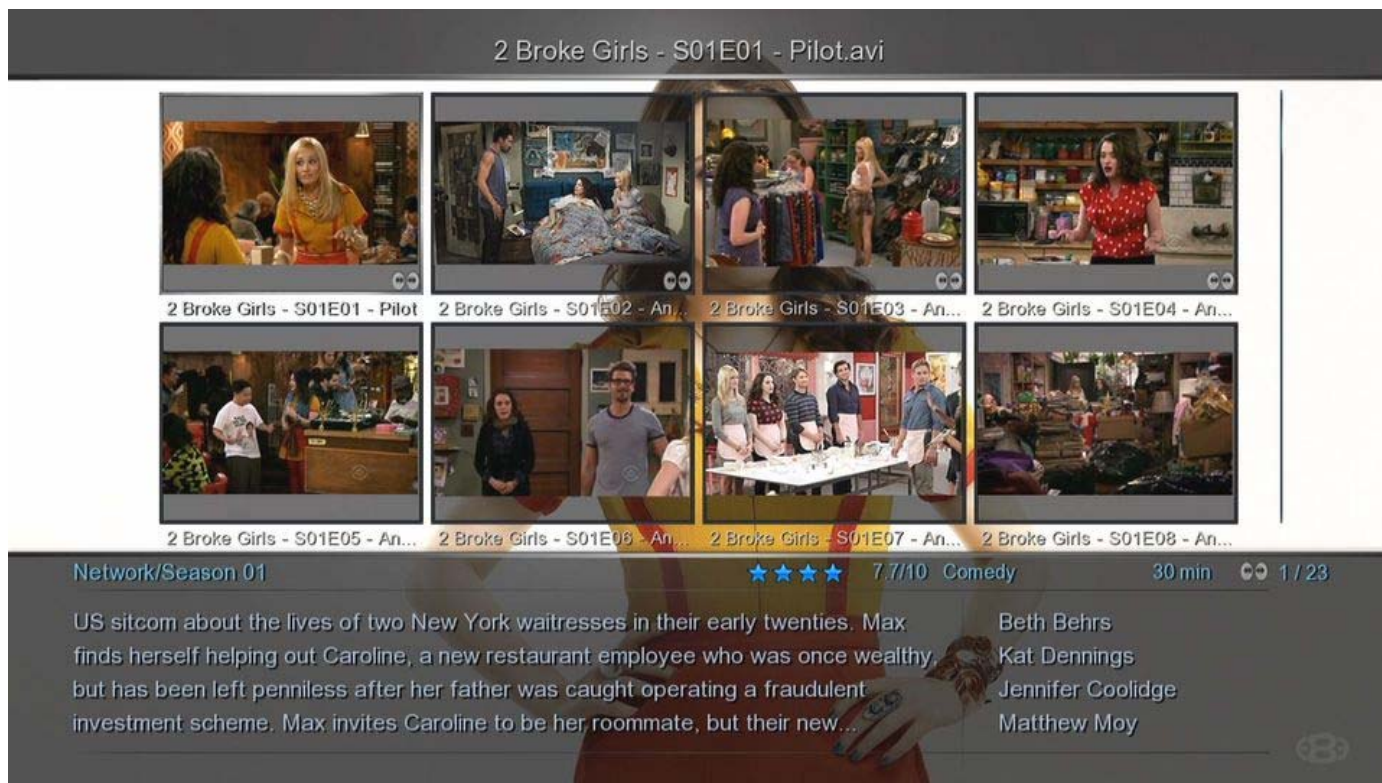
Click 'Presets..' & select Mede8er

Media Center tab

Preferences – continued 1:

Please note: The Mede8er presets has been updated to default to Episode Thumbnails.

In this mode TVrename **auto creates** a file 'View.xml' in every Season folder to display the thumbs correctly.



Example of Episode Thumbs – when selecting Episode Thumbnails (.jpg)

Should you wish to create 'Series.jpg' files:

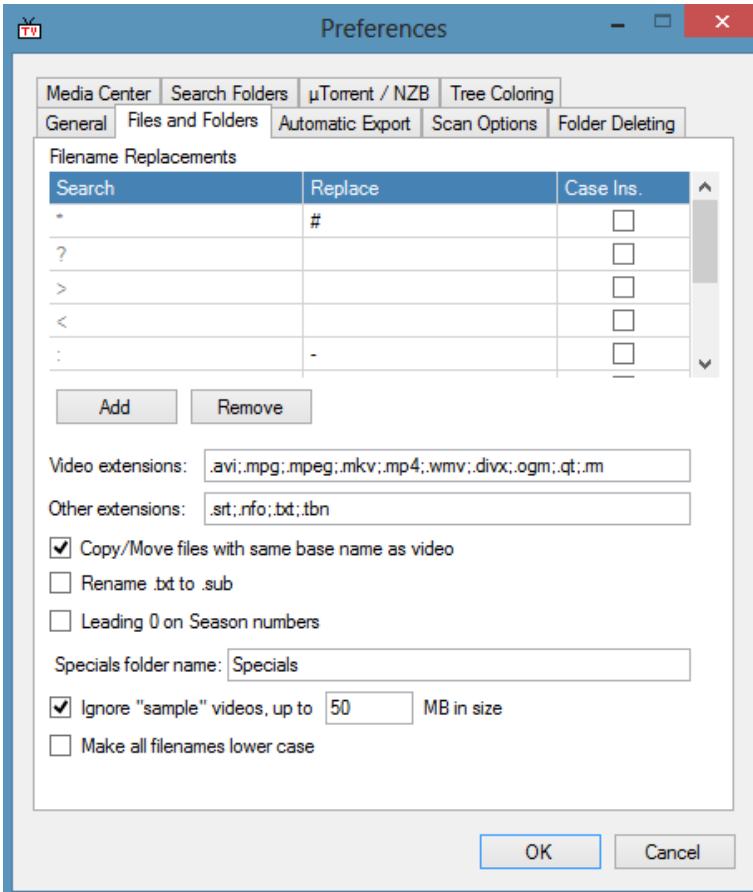
Select 'Create series poster (series.jpg)' (check box ON)

Deselect 'Episode Thumbnails (.jpg)' (check box OFF)



Example of Series poster – when selecting 'Create series poster (series.jpg)'

Preferences – continued 2:



Add required video extensions that you may have in the 'Video Extensions' box.

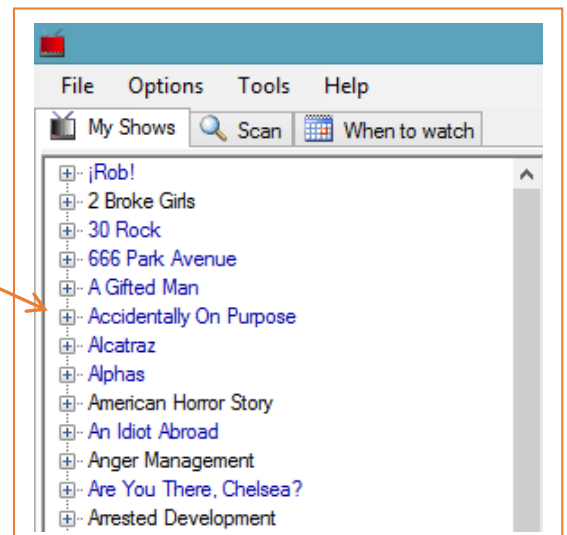
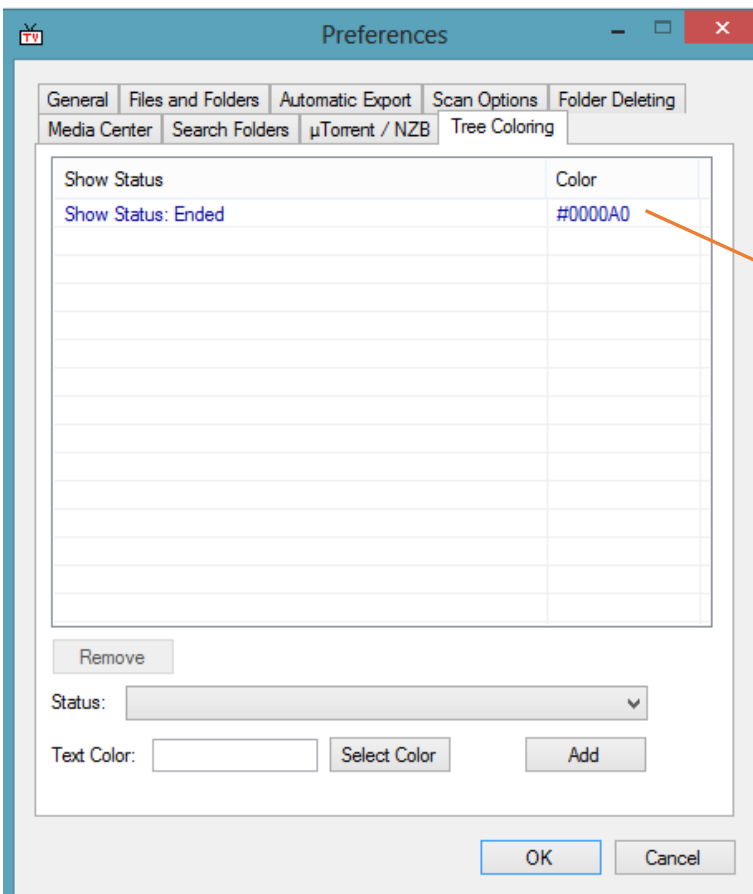
Only video extensions specified here will be processed.

You may choose 'Leading 0 on Season numbers'

i.e.: Season 01 instead of Season 1

Files and Folders tab

Assigning a color to a Show status



A color can be assigned to a Show Status. Here's an example of Shows that ended

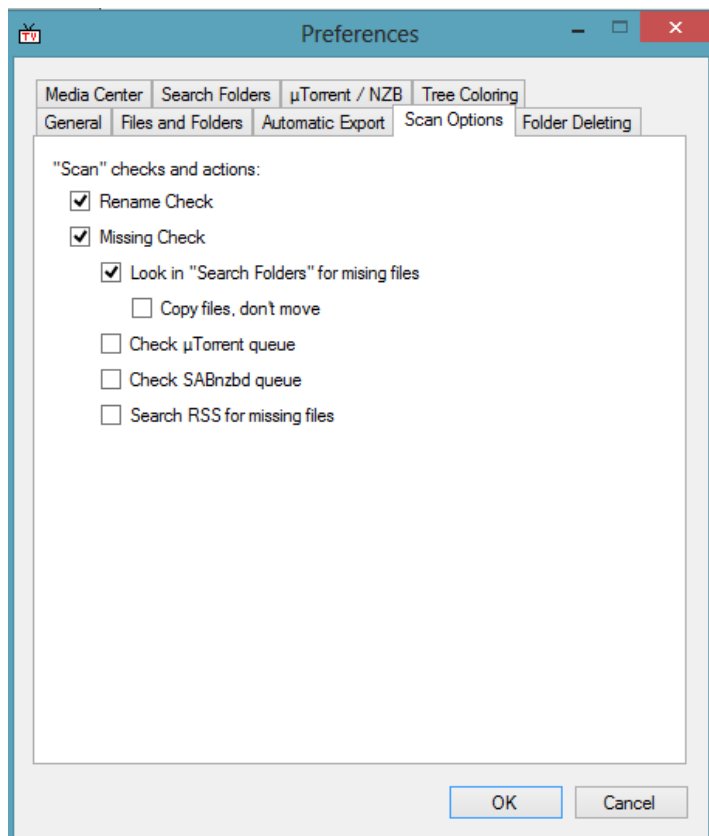
Select 'Show Status Ended' from the Status pull down menu.

Click 'Select Color' and choose one. Click 'OK' and click 'Add'.

Tree Coloring tab

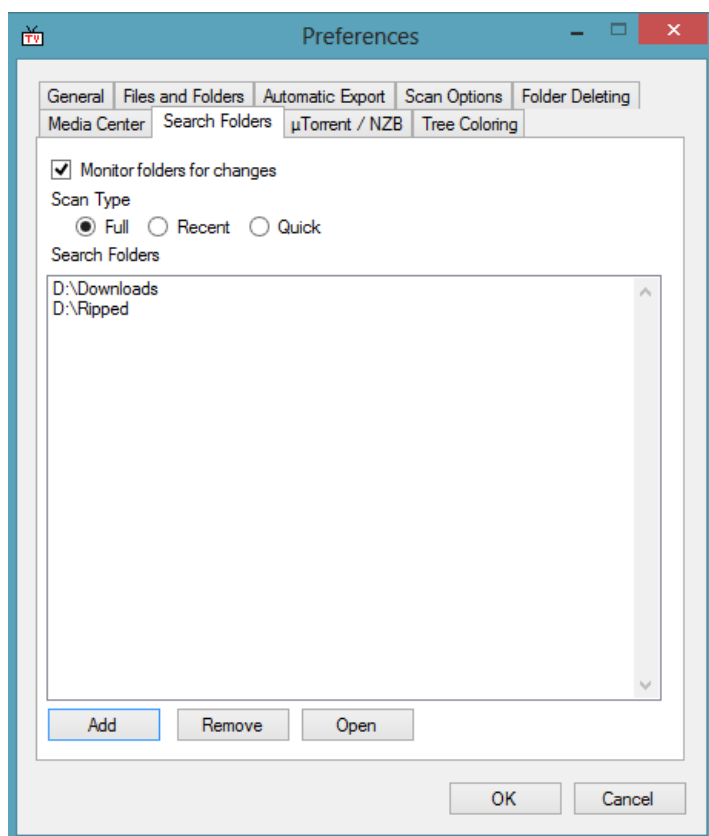
Preferences – continued 3:

Scan options:



Scan Options tab

Search Folders:



Search Folders tab

Select Rename Check to have your media files renamed as per set rules. [\(explained on page 7\)](#)

Select Missing Check to determine which episodes are missing from your library.

Select 'Look in....' for downloaded episodes to be processed and moved to the correct folders.

If 'Look in "Search Folders"..' is activated in the Scan Options tab the path to the folders gets set here.

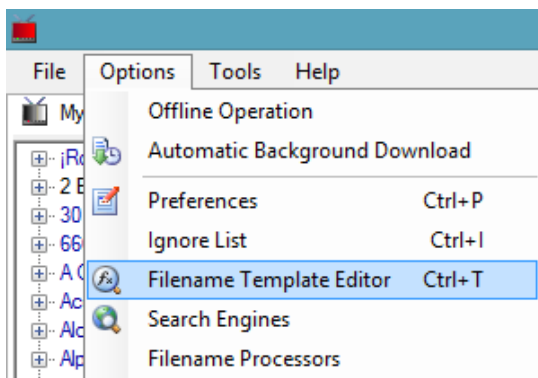
Click 'Add' and browse for the Folders. Multiple folders may be added.

TV rename will move or copy the files to the correct Show. It will rename it correctly and create the required episode xml and thumbnail image.

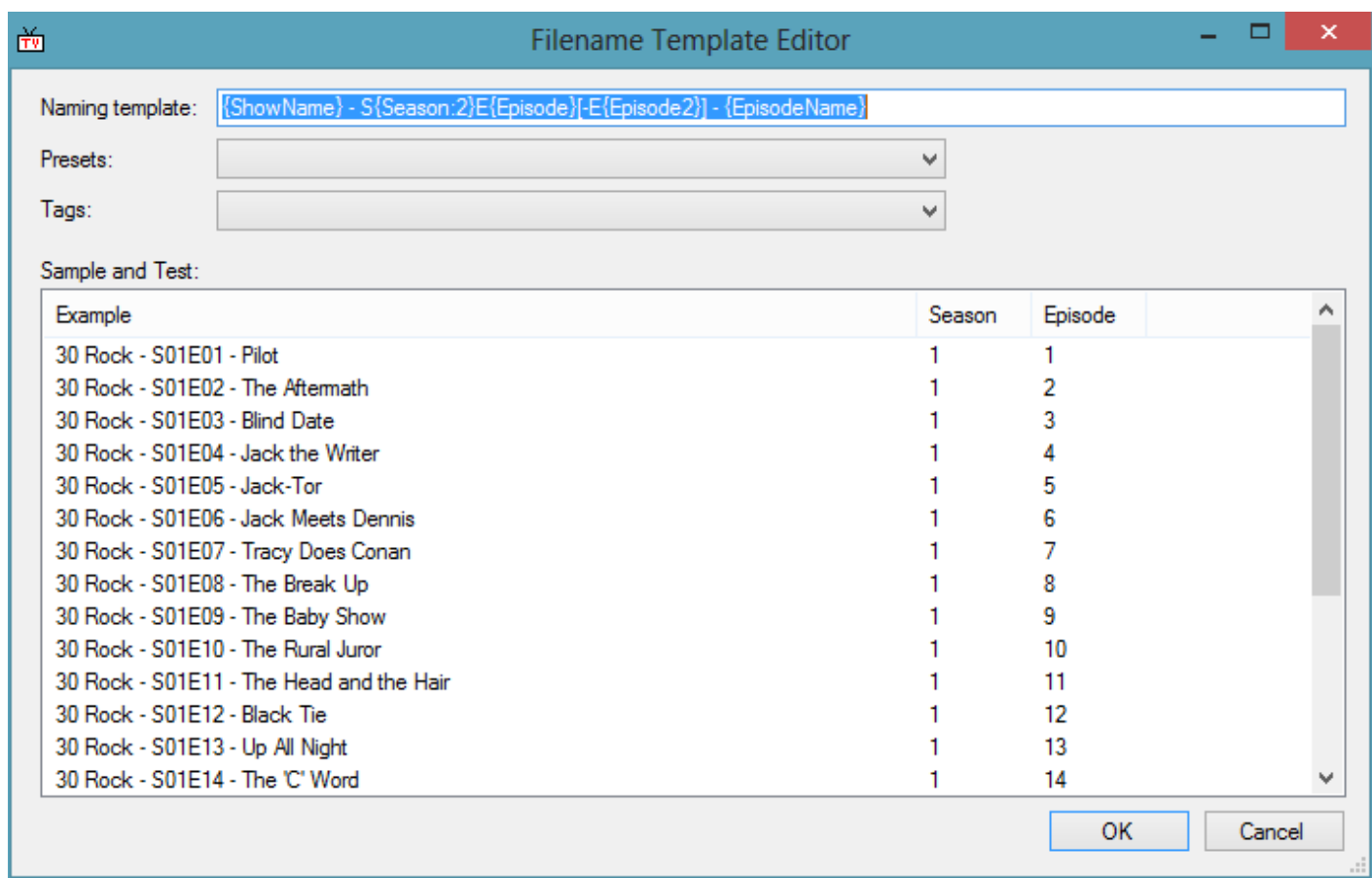
Filename Template Editor:

Setting up your 'Filename Template Editor': (Ctrl + T)

This will control your naming conventions for your TV Series episodes.

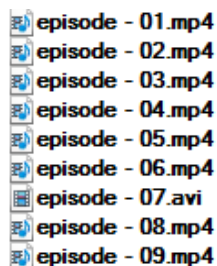


It has naming templates from which to choose or you may set it to your personal preference.

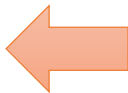


File Template Editor window

Preparing your TV Series directories and files for TVrename processing:



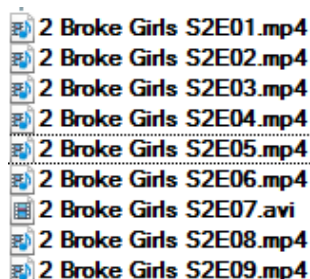
episode - 01.mp4
episode - 02.mp4
episode - 03.mp4
episode - 04.mp4
episode - 05.mp4
episode - 06.mp4
episode - 07.avi
episode - 08.mp4
episode - 09.mp4



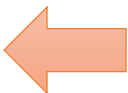
This will not be processed

You need to give it more info.
You can use a freeware Batch Rename utility to fix this quickly.

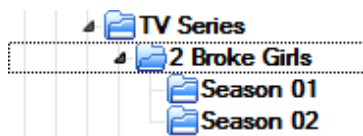
Sometimes having the 'Year' in the filename prevents the file from being processed...remove the 'Year' if this happens.



2 Broke Girls S2E01.mp4
2 Broke Girls S2E02.mp4
2 Broke Girls S2E03.mp4
2 Broke Girls S2E04.mp4
2 Broke Girls S2E05.mp4
2 Broke Girls S2E06.mp4
2 Broke Girls S2E07.avi
2 Broke Girls S2E08.mp4
2 Broke Girls S2E09.mp4



This will be processed
It has sufficient information.



TV Series
2 Broke Girls
Season 01
Season 02



Rules for Show and Season folders:

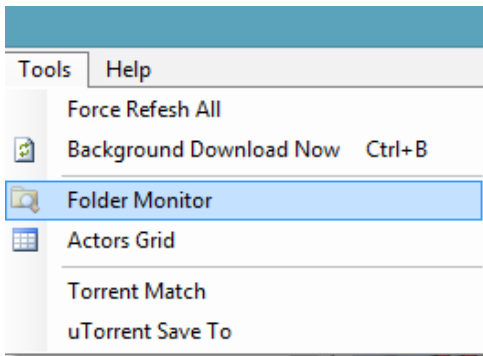
2 Broke Girls Show folder (Base folder)
Season 01 Season 1 folder
All the season 1 files resides in here
2 Broke Girls S01E01
2 Broke Girls S01E02
2 Broke Girls S01E03...etc

Season 02 Season 2 folder
All the season 2 files resides in here
2 Broke Girls S02E01
2 Broke Girls S02E02
2 Broke Girls S02E03...etc

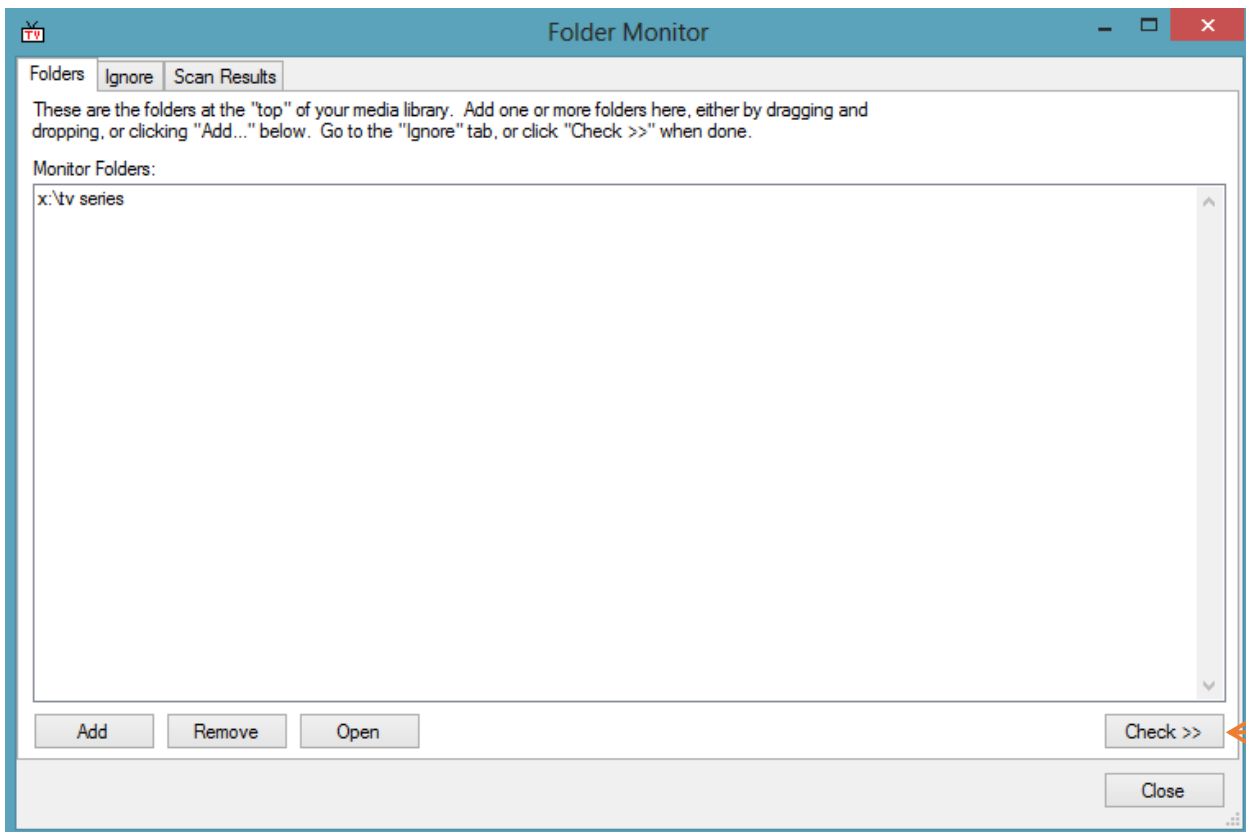
Please take note if your settings are for
Season 01 or Season 1
See 'Leading 0 on Season numbers' (page 5)

This is one of the BIG benefits of TVrename: the ability to throw all the episodes into its respective folder and TVrename will create a synopsis and thumbnail image every episode.

Adding your Show paths in TVrename – Option 1 For large libraries.



Tools menu > Folder Monitor



Folder Monitor window

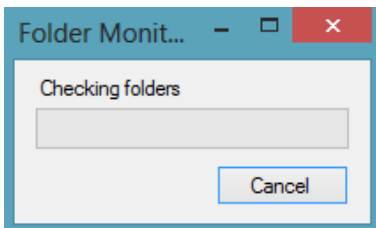
Click 'Add' > browse for your Drive for your TV Series folder then click ok.
Selected Drive and Folder will show in the 'Monitor Folders:' window. (Similar to above)
(If you have TV Series located on different drives/folders you may add them individually.)

Next step:

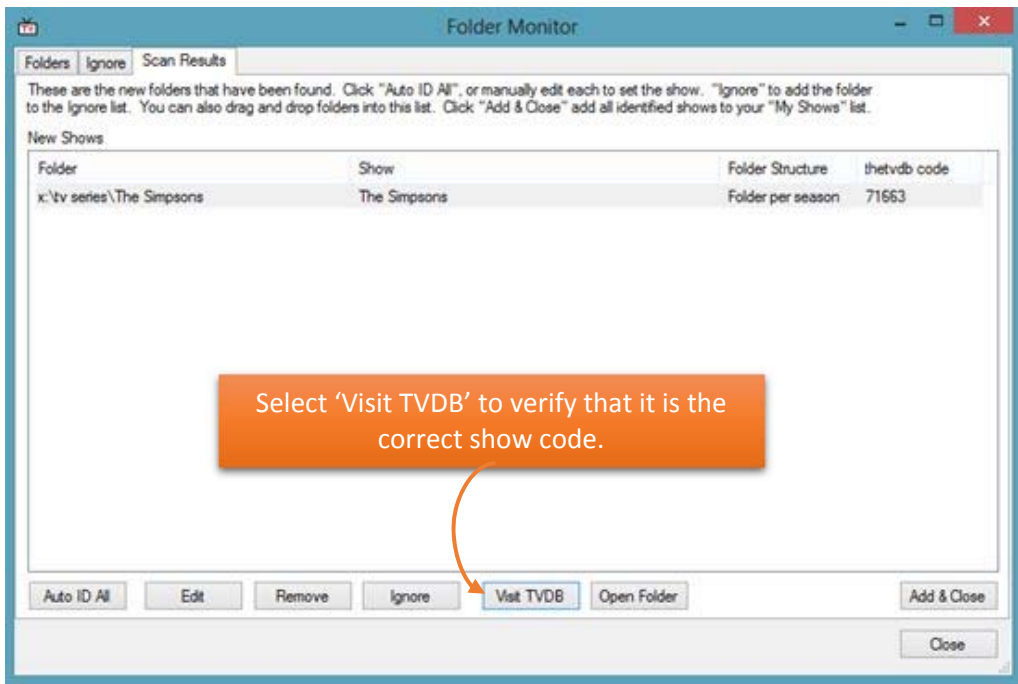
Click the 'Check >>' button.

(Please do a 'Check >>' every time you add a new **Series** to your collection...not required for new seasons.)

Adding your Show paths in TVrename (large libraries) - continued:



'Folder Monitor' box appears and when this is done a list of Shows will be displayed in the 'Scan Result' tab.

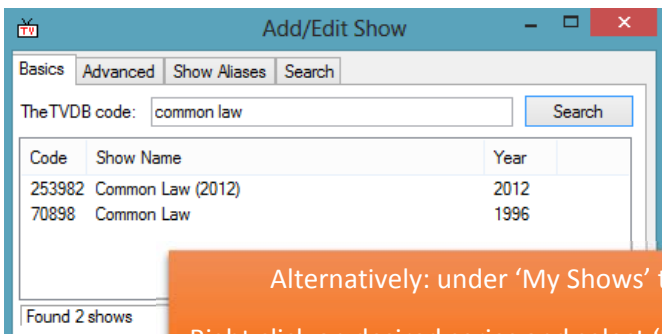
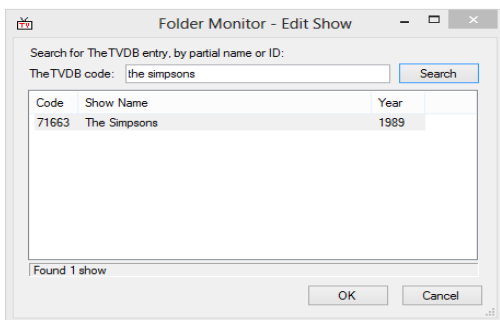


Select 'Visit TVDB' to verify that it is the correct show code.

Folder Monitor window - displays all the TV Shows found.

Select 'Auto ID All' - This will scan TheTVDB for relevant show codes. You may select 'Visit TVDB' to verify that it is the correct show code.

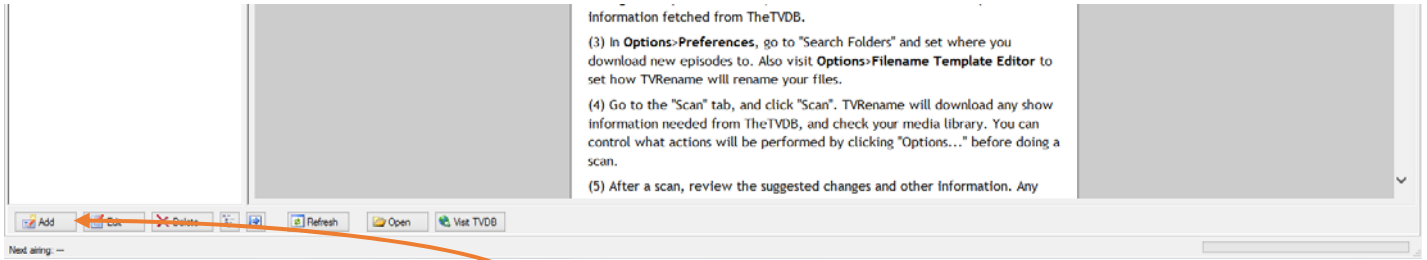
Click 'Edit' if incorrect code found and type in show name to retrieve a list of shows, select the correct show and click 'ok'



Alternatively: under 'My Shows' tab, Right click on desired series and select 'Edit Show' and rectify as required.

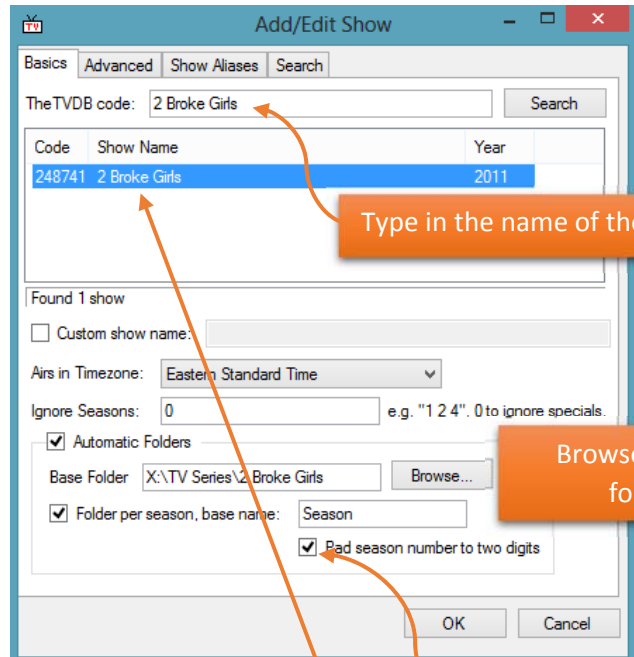
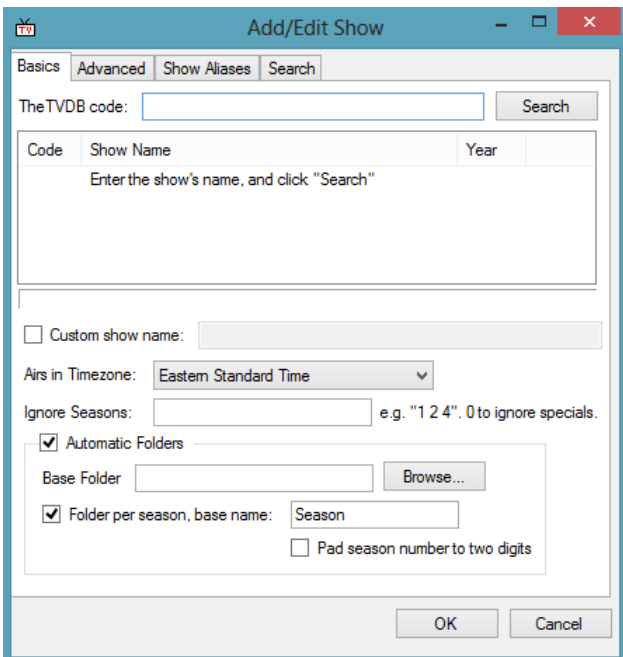
Please do a 'Check >>' every time you add a new Series to your collection...not required for new seasons.

Adding your Show paths in TVrename – Method 2 For small libraries.



My Shows tab

Select 'Add' at the bottom left

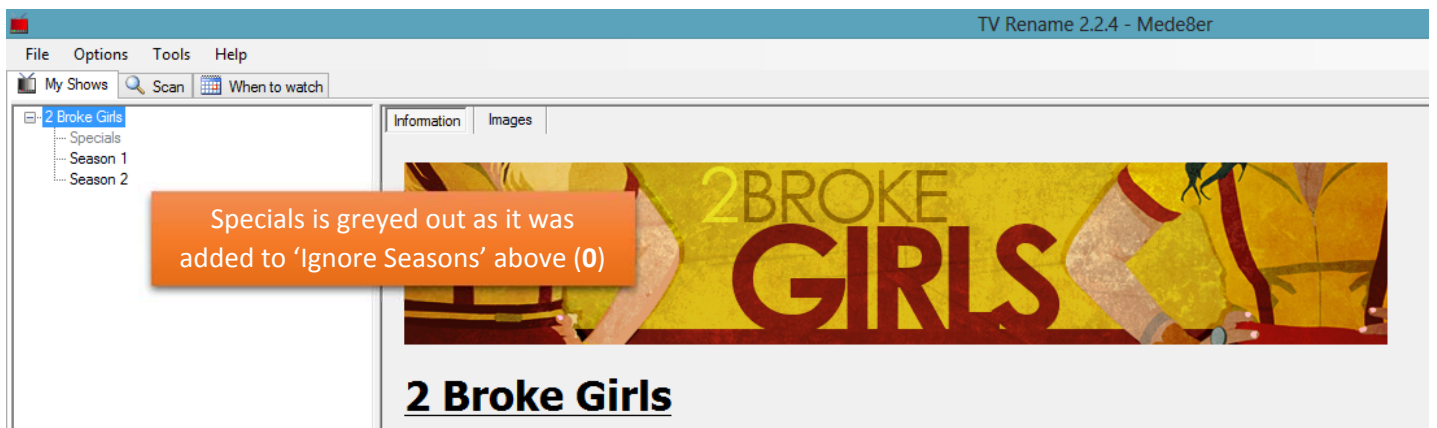


Type in the name of the Show

Browse for the folder

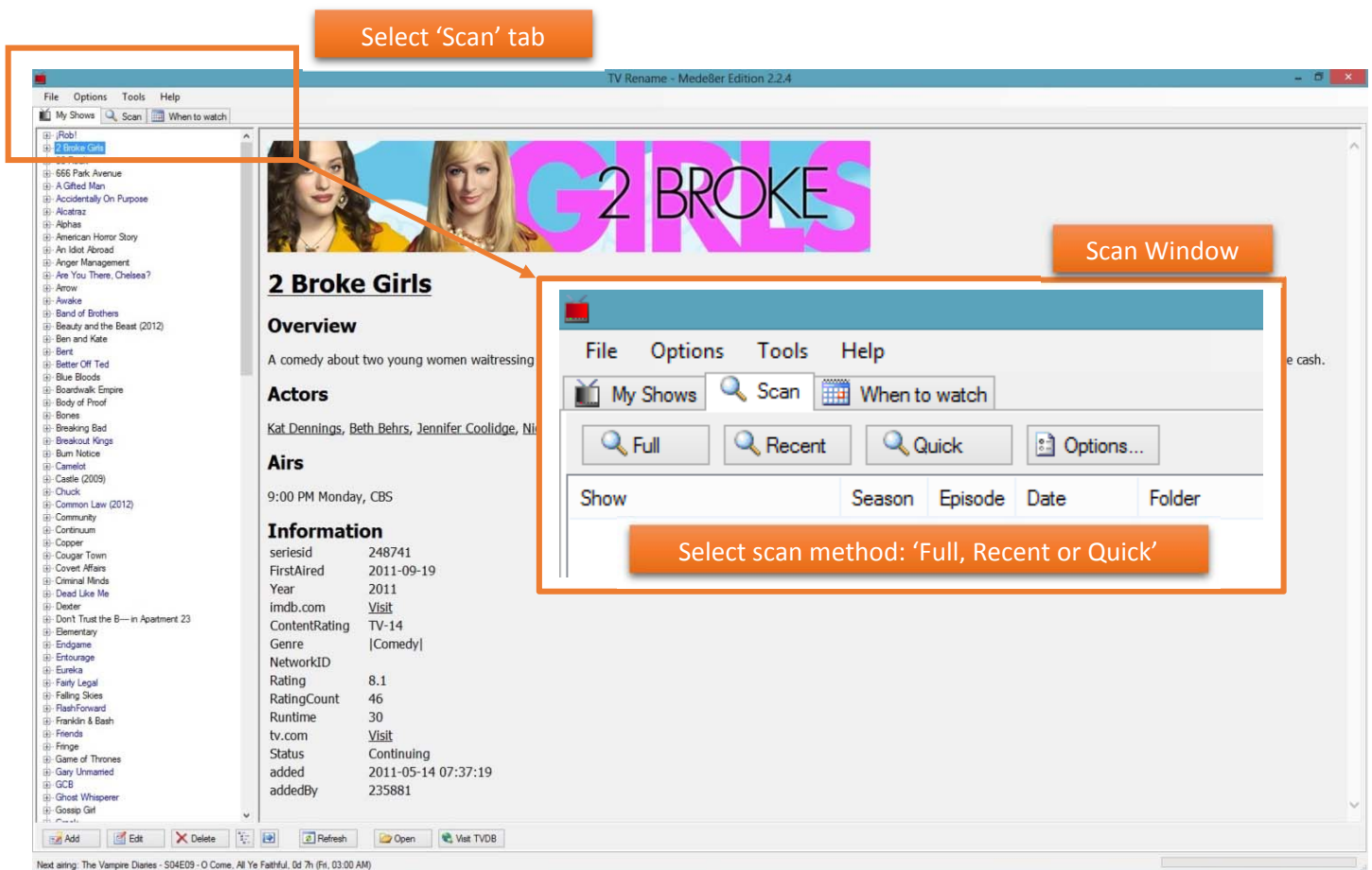
Select Pad if you want 01

Type in the name of the show and click 'Search' - this will return the TVDB code.
 Browse your hard drive for your Base folder (**TV Show – NOT season**)
 Add in other info: ignore seasons, Pad season etc.
 Click on the Show in the search box and click 'OK'



The newly created Show will appear in 'My Shows' tab

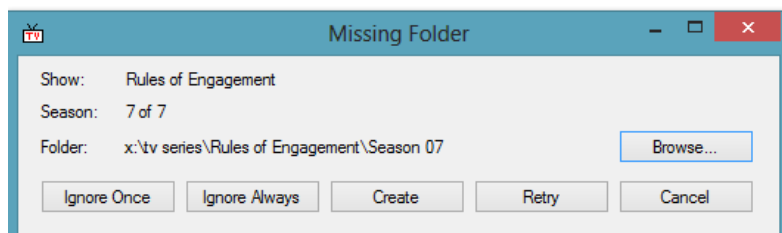
Scanning your Shows:



My Shows tab

Select 'Scan' tab, this will open the Scan window with the following choices:

- Full scan:** Does a full check of all your Shows
- Recent scan:** Does a check of the last 7 days
- Quick scan:** Searches for any new files downloaded (looks in 'Search Folders' as specified in 'Preferences')
- Options...:** Quick link to 'Scan options' found in 'Preferences'



While Scanning it may prompt for 'Missing Folder' (this relates to missing Seasons)

- Ignore Once:** Ignores for this Scan and will prompt you again on the next Scan
- Ignore Always:** Ignores it for this Scan and ALL future Scans
- Create:** Creates the folder (recommended)
- Retry:** Do another check to find the folder (Season)

Scanning your Shows – continued 2:

The screenshot shows the TVRename - Mede8er Edition 2.2.4 interface. The main window displays a list of TV shows and episodes. Three orange callout boxes are overlaid on the interface:

- Missing episodes:** Points to the 'Missing (19 items)' section at the top of the list.
- Missing images:** Points to the 'Download (3 items)' section, which includes image files like 'poster/2487413.jpg'.
- Missing metadata:** Points to the 'Mede8er XML File (7999 items)' section, which lists XML files for various episodes.

At the bottom of the window, there is a 'Do Checked' button with a red arrow pointing to it from a callout box below.

Click 'Do Checked', all checked items will be processed and created automatically

The screenshot shows the 'Progress' dialog box in TVRename. It displays the following information:

- Filename:** (empty field)
- File:** ---% Done
- Total:** ---% Done
- Disk:** --- GB free

Below this information is a list of actions and items:

Action	Item
Write XML	Bones - S03E07 - Boy in the Time Capsule.xml
Write XML	Bones - S03E08 - The Knight on the Grid.xml
Write XML	Bones - S03E09 - The Santa in the Slush.xml
Write XML	Bones - S03E10 - The Man in the Mud.xml
Write XML	Bones - S03E11 - Player Under Pressure.xml

At the bottom of the dialog are 'Pause' and 'Cancel' buttons.

Please be patient while it's downloading image files, it might take a while depending on the size of your library and internet speed.

In TVrename options we have by default set the Mede8er presets to 'Shrink large series and episode images' this optimizes the image files by reducing them before adding it to your library. This greatly improves the speed of the Mede8erTV Wall.

Scanning your Shows – continued 3:

Show	Season	Episode	Date	Folder	Episode/Filename	Folder/Filename	Filename
Missing (19 Items)							
<input type="checkbox"/> 2 Broke Girls	2	10	2012-12-11	x:\tv series\2 Broke Girls\Season 02	2 Broke Girls - S02E10 - And the Big Opening		
<input type="checkbox"/> 2 Broke Girls	2	11	2012-12-11	x:\tv series\2 Broke Girls\Season 02	2 Broke Girls - S02E11 - And the Stork Partner		
<input type="checkbox"/> American Horror Story	2	9	2012-12-13	x:\tv series\American Horror Story\Season 02	American Horror Story - S02E09 - The Coat Hanger		
<input type="checkbox"/> Arrow	1	9	2012-12-11	x:\tv series\Arrow\Season 01	Arrow - S01E09 - Year's End		
<input type="checkbox"/> Bones	8	10	2012-12-11	x:\tv series\Bones\Season 08	Bones - S08E10 - Episode 10		
<input type="checkbox"/> Criminal Minds	8	11	2012-12-13	x:\tv series\Criminal Minds\Season 08	Criminal Minds - S08E11 - Penetrate		
<input type="checkbox"/> Dexter	7	11	2012-12-10	x:\tv series\Dexter\Season 07	Dexter - S07E11 - Do You See What I See		
<input type="checkbox"/> Don't Trust the B... in Apartment...	2	6	2012-12-12	x:\tv series\Don't Trust the B... in Apartment 23\Se...	Don't Trust the B... in Apartment 23 - S02E06 - Bar Lies ...		
<input type="checkbox"/> Gossip Girl	6	9	2012-12-11	x:\tv series\Gossip Girl\Season 06	Gossip Girl - S06E09 - The Revengers		
<input type="checkbox"/> Hawaii Five O	3	10	2012-12-11	x:\tv series\Hawaii Five O\Season 03	Hawaii Five O - S03E10 - Hukal Kula		
<input type="checkbox"/> How I Met Your Mother	8	10	2012-12-11	x:\tv series\How I Met Your Mother\Season 08	How I Met Your Mother - S08E10 - The Over-Correction		
<input type="checkbox"/> Leverage	5	13	2012-12-12	x:\tv series\Leverage\Season 05	Leverage - S05E13 - The Cockscrew Job		
<input type="checkbox"/> Modern (2008)	5	10	2012-12-09	x:\tv series\Modern\Season 05	Modern (2008) - S05E10 - The Kindness of Strangers		
<input type="checkbox"/> Modern Family	4	10	2012-12-13	x:\tv series\Modern Family\Season 04	Modern Family - S04E10 - Diamond in the Rough		
<input type="checkbox"/> New Girl	2	11	2012-12-12	x:\tv series\New Girl\Season 02	New Girl - S02E11 - Santa		
<input type="checkbox"/> Pizzoli & Isles	3	13	2012-12-12	x:\tv series\Pizzoli & Isles\Season 03	Pizzoli & Isles - S03E13 - Mutual Love		
<input type="checkbox"/> The Mentalist	5	10	2012-12-10	x:\tv series\The Mentalist\Season 05	The Mentalist - S05E10 - Panama Red		
<input type="checkbox"/> The Middle	4	10	2012-12-13	x:\tv series\The Middle\Season 04	The Middle - S04E10 - Twenty Years		
<input type="checkbox"/> Whitney	2	4	2012-12-13	x:\tv series\Whitney\Season 02	Whitney - S02E04 - Hello Giggles		

Scan tab

Once the Scan is completed your library should now contain all the Show and Episode synopsis including images.

Note:

Although TVrename will create the following files if not found it will not overwrite them if they do exist:

View.xml and Images files (fanart.jpg, series.jpg, folder.jpg and episode thumb.jpg's).

We do not want to overwrite user preferred images that was saved and do not want to alter the View mode users have set on the Mede8er.

Should you want TVrename to update the files they will need to be deleted (manually).

Series and Episode xml files will be updated as per the TVDB updates.

Ignore files and how to restore Ignored files and folders:

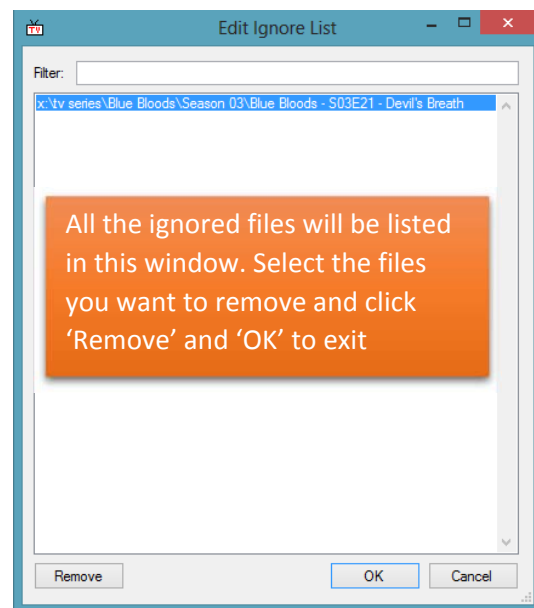
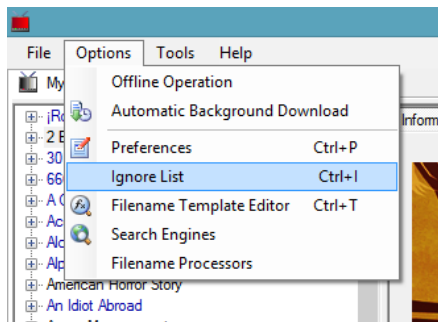
After the Scan you will be left with episodes that are missing from your library. You have 2 choices here: Update your library *or* ignore the missing episodes.

Show	Season	Episode	Date	Folder
Missing (4 Items)				
<input type="checkbox"/> Blue Bloods	3	21	2013-04-27	x:\tv series\Blue Bloods\Season 03
<input type="checkbox"/> Da Vinci's Demons	1	3	2013-04-27	x:\tv series\Da Vinci's Demons\Season 01
<input type="checkbox"/> Nikita	3	19	2013-04-27	x:\tv series\Nikita\Season 03
<input type="checkbox"/> Touch (2012)	2	11	2013-04-27	x:\tv series\Touch\Season 02
Rename (1 Item)				
<input checked="" type="checkbox"/> The Vampire Diaries	4	19	2013-04-27	x:\tv series\The Vampire Diaries\Season 04
Download (1 Item)				

To ignore the files: Right click and choose 'Ignore Selected'

How to restore ignored files:

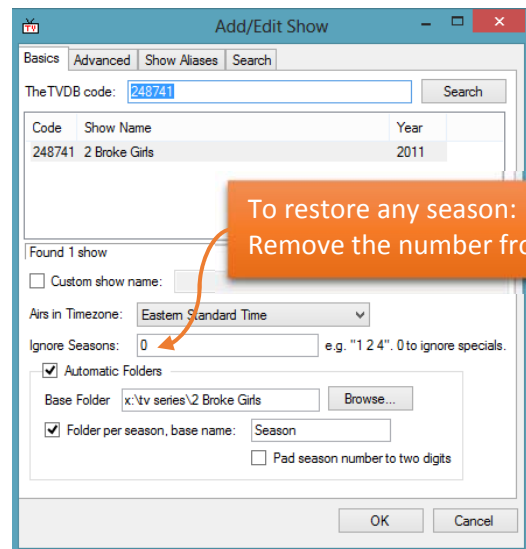
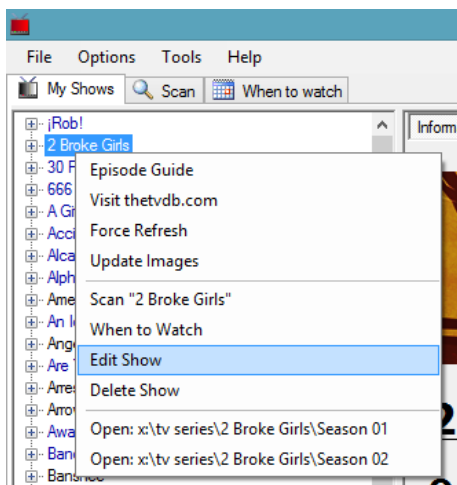
Go to 'Options' > 'Ignore List': (Ctrl + I)



Edit Ignore List window

How to restore ignored folders (Seasons and Specials):

Under 'My Shows': Select Show - right click and Edit Show.

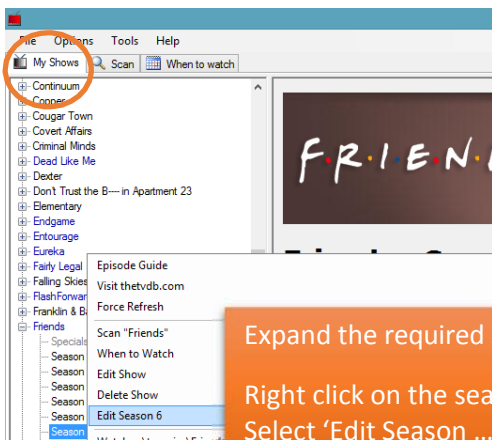


Add/Edit Show window

2 in 1 episodes

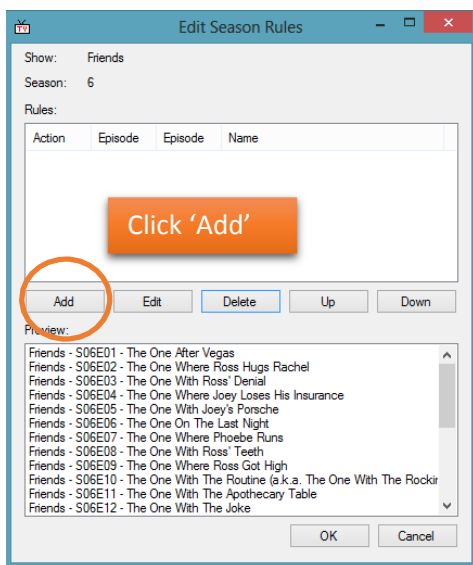
Episodes that are 2 in 1 will have 1 of them showing up missing.

To rectify this: Go to 'My Shows' tab.

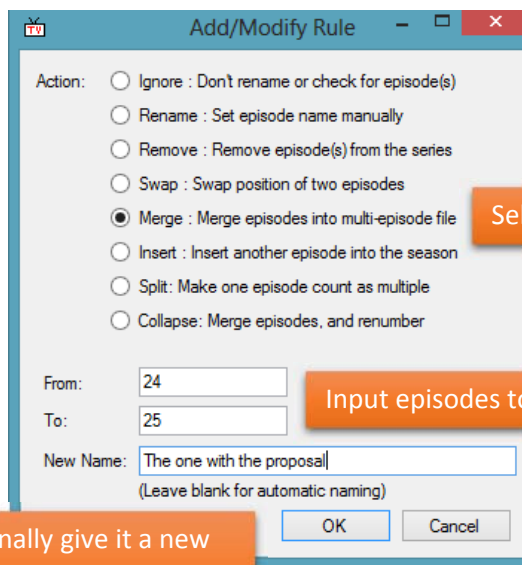


Expand the required Show folder

Right click on the season containing the '2 in 1'
Select 'Edit Season ...'



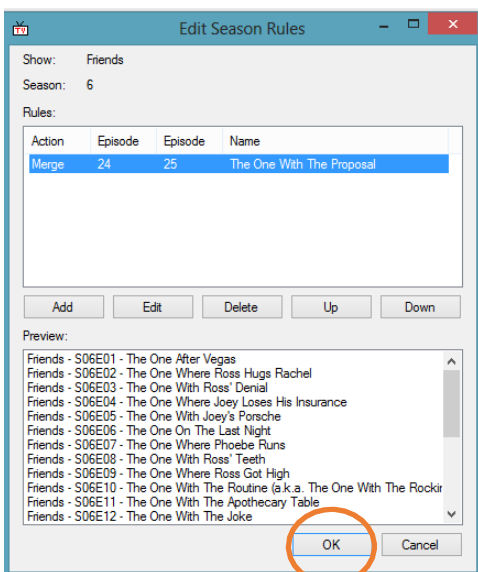
Click 'Add'



Select 'Merge'

Input episodes to merge

Optionally give it a new name or leave blank for automatic naming



Do this for every '2 in 1' episode as required.

Tip: These episodes are normally double in size compared to the others in the folder with usually twice the runtime.

This only needs to be done once.

Episode thumbnails user guide for Existing users of TVrename:

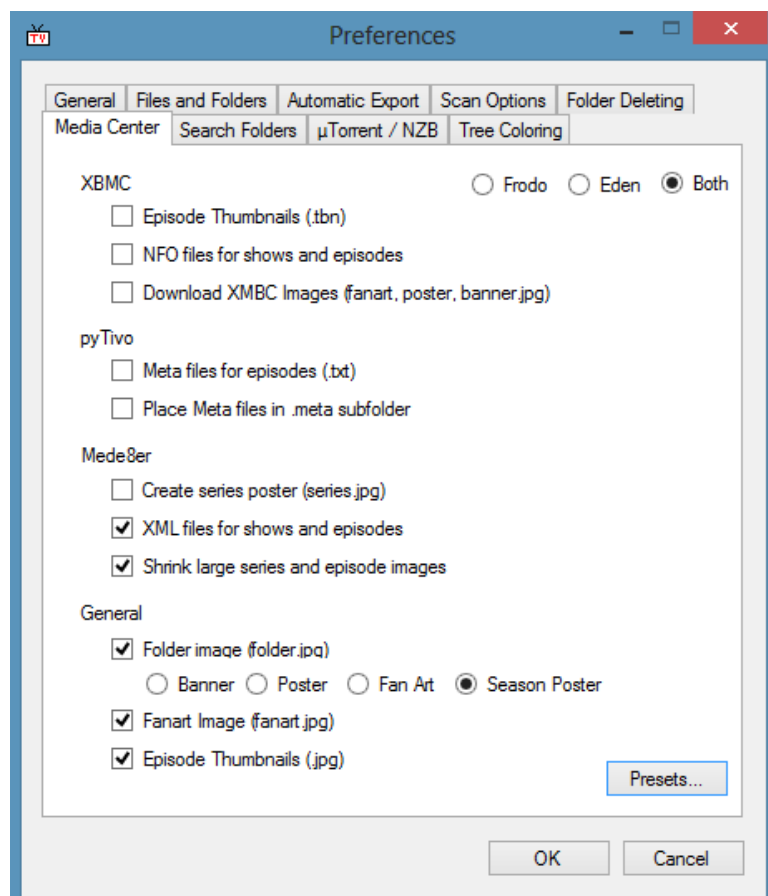
Please delete all View.xml and series.jpg files before running TVrename.

To create a batch file to search and delete the above files, open Notepad and insert the following:

```
@echo off
del /s View.xml
del /s series.jpg
pause
```

Save the Notepad file as **Delclean.bat**

Place this in you **Series folder** and run it.....make sure it's in the root of your Series folder only!!!

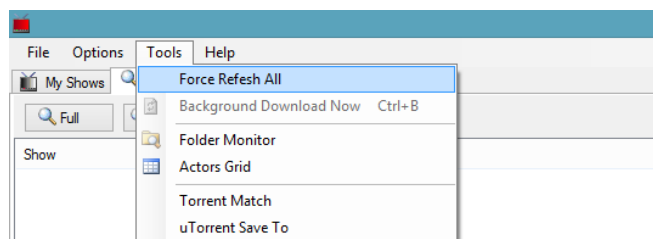


Media Center tab

In TVrename click 'Presets..' and select Mede8er.

The options will be as per above image.

As noted before, if Episode Thumbnails is selected the View.xml files will be created automatically.



Do a 'Force Refresh All' and Scan.