

# X3D V3.0.1 Firmware User Guide

16 Sept 2013

# V3

High Definition Multimedia Player



# MOVIE SCRAPER

The V3 firmware supports Movie scraping of Images and Metadata via a downloadable App. The Scraper App uses the tmdb api and as such we suggest you join the tmdb and contribute in to keep all Languages and Images as up to date as possible.

## Settings

By default the Scraper will scrape in the Language as set in the X3D GUI. The Scraper Language can be changed to a specific Language in the Setup Menu -- Setup --> Misc --> Scrape Language

## Preparing your collection

For correct Scraper functionality all Movies, Documentaries and Music Concerts must be arranged in the normal Mede8er folder structure ie one video file per folder. Sub folders within a movie folder named 'Subs' or 'Sample' will not be scraped and for other sub folders that you do not want scraped you can add a file named 'mjbignore.xml' and it will be ignored. Any folder with a movie.name.xml will not be scraped and you can use the edit facility to edit these movies. The App uses the folder name with a fallback to movie name for scraping purposes. For best results we suggest you name your folders 'Movie Name (Year)'

## Scanning your Library

**The Root folder of the Movie Collection must be write enabled.** To scan your library you must focus on the Root Folder of your library and press the 'Menu' button and then select 'Add to Favourite' option. Open the Favourite screen and focus on the shortcut and press the 'Menu' button and select the 'Scan' option. The X3 will start the scan process and Scan all folders and sub folders in order to scrape images and xml files and at the same time it will build a dBase file. Progress of the scan will be displayed. If new content is added to the root folder then the scan operation must be repeated.

## Changing the Movie Sheet Skin (about.jpg)

The look of the Movie Sheet can be changed by downloading and installing a skin from the Mede8erforum.com. To Install the Scraper Skin - download and unzip the skin file - navigate to the skin folder and press the 'Menu' button and select option 'Set to Skin' and the new skin will be installed. 'Set to Skin' function is not cumulative so if you require to install a main GUI skin and a scraper skin then copy the folder 'scraper' (found inside the scraper skin folder) into the GUI skin folder and use the 'Set to Skin' function.

**To update the movie sheet skin on an existing collection that was scraped in V3**

- Focus on the root of your movie collection and press 'Menu' and select 'Clear about.jpg'
- Focus on the root of your movie collection and press 'Menu' button and select 'Scan'
- X3D will generate new Movie Sheets with the new skin



# Edit Scraped Movies

You can edit a movie in both the Media Library and in the Movie JukeBox. To edit a movie from the thumbnail cover - focus on the Movie Thumbnail and press 'Menu' and then select 'Edit'. To Edit a Movie from the movie sheet 'about.jpg' - press the 'Edit' button on the remote control. If the scraped movie results are totally incorrect you can edit the Movie name and select 'scrape' and the App will scrape based on the new name you made and the source folder name will not be changed, the modified name will only be used for search purposes. The search results will be displayed and you can use the Right Nav button to browse all the movies that were found. Select the correct movie and press 'Enter' and its details and images will be loaded onto the screen. Another method is to enter the IMDB tt ref number to find a particular movie. Look up the movie on [www.imdb.com](http://www.imdb.com) and note the tt number in the address bar and enter this into the text input on the Virtual Keyboard on the Mede8er

[http://www.imdb.com/title/tt1190080/?ref\\_=sr\\_1](http://www.imdb.com/title/tt1190080/?ref_=sr_1)

## NOTE

JukeBox+ folders cannot be scanned or edited. All scanning & editing must be done on the source folders.



## Search results screen

After a search the results will be displayed showing a poster of the movie, year, plot and star rating. If there are multiple results then left and right arrows will be displayed and you can navigate all the search results by pressing the Right / Left Nav button. Focus on the correct movie and press 'Enter' and the images and info will be loaded onto the screen.



## Select Fanart Images

Use the Left / Right Navigation buttons to navigate the screen. When the Fanart background is highlighted in blue - press the 'Enter' button and a selection of available fanart images will be displayed. Navigate the fanart images with the Left / Right Navigation buttons and select the one you require by focusing on it and pressing the 'Enter' button.



## Select Movie Poster Images

Use the Left / Right Navigation buttons to navigate the screen. When the Movie Poster cover is highlighted in blue - press the 'Enter' button and a selection of available movie posters will be displayed. Navigate the poster images with the Left / Right Navigation button and select the one you require by focusing on it and pressing the 'Enter' button.



## Change Movie Info Options

Use the Left / Right Navigation buttons to navigate the screen. Options that are available for editing are Year, Runtime, Star Rating and Genre. To Edit a option - focus on the option and use the Up / Down Nav buttons to change the value. After editing Genre press the 'Return' button to return to the main screen.

# TV SERIES SCRAPER

The V3 firmware supports TV Series scraping of Images and Metadata via a downloadable App. The Scraper App uses the thetvdb api and as such we suggest you join the tvdb and contribute in order to keep all Languages and images as up to date as possible.

## Settings

By default the Scraper will scrape in the Language as set in the X3D GUI. The Scraper Language can be changed to a specific Language in the Setup Menu -- Setup --> Misc --> Scrape Language

## Preparing your TV Series

For correct Scraper functionality TV series must be arranged in a standard form that Mede8er can understand ie same structure as used by TVRename.

**The root folder must have the words 'TV Series' in the folder name and its case sensitive.**

Root Folder ----> **TV Series**

-----> **TV Series Name 1**

-----> Season 01

-----> series.name - S01E01 - episode.name.mkv

-----> series.name - S01E02 - episode.name.mkv

-----> etc etc

-----> Season 02

-----> series.name - S02E01 - episode.name.mkv

-----> series.name - S02E02 - episode.name.mkv

-----> etc etc

-----> Season 03

-----> etc

-----> **TV Series Name 2**

-----> Season 01

-----> series.name - S01E01 - episode.name.mkv

-----> series.name - S01E02 - episode.name.mkv

-----> etc etc

-----> Season 02

-----> series.name - S02E01 - episode.name.mkv

-----> series.name - S02E02 - episode.name.mkv

-----> etc etc

-----> etc

## Season folder naming

The Season folder must be named Season 1 or Season 01 etc

## Episode naming

Episodes should be named in a specific way in order for the App to scrape them correctly.

### Examples

2 Broke Girls - S01E01 - Pilot.mkv

2.Broke.Girls.S01E01.Pilot.mkv

2 Broke Girls - 1X01 - Pilot.mkv

2.Broke.Girls.1X01.Pilot.mkv

A good program that will assist correct naming can be downloaded from <http://www.therenamer.com>

## Auto View Setup Menu

For correct functionality you must enable 'Auto View' --- Setup --> Misc --> Auto View

## Write Enabled

The source folder of the TV Series must be write enabled in order for X3D to save data and images.

# TV Series Specials

Make a folder called 'Specials' on the same level as the Season folders. Use the correct naming of Episode Specials as in foll example.

**The root folder must have the words 'TV Series' in the folder name and its case sensitive.**

Root Folder ----> **TV Series**

----> **TV Series Name 1**

----> Season 01

----> series.name - S01E01 - episode.name.mkv

----> series.name - S01E02 - episode.name.mkv

----> etc etc

----> Season 02

----> series.name - S02E01 - episode.name.mkv

----> series.name - S02E02 - episode.name.mkv

----> etc etc

----> Season 03

----> etc

----> Specials

----> series.name - S00E01 - episode.name.mkv

----> series.name - S00E02 - episode.name.mkv

----> **TV Series Name 2**

----> Season 01

----> series.name - S01E01 - episode.name.mkv

----> series.name - S01E02 - episode.name.mkv

----> etc etc

----> Season 02

----> series.name - S02E01 - episode.name.mkv

----> series.name - S02E02 - episode.name.mkv

----> etc etc

----> etc

----> Specials

----> series.name - S00E01 - episode.name.mkv

----> series.name - S00E02 - episode.name.mkv

## Specials Episode naming

Episodes should be named in a specific way in order for the App to scrape them correctly.

### Examples

Game of Thrones - S00E01 - Inside Game of Thrones

Game of Thrones - 0x01 - Inside Game of Thrones

A good program that will assist correct naming can be downloaded from <http://www.therenamer.com>

# TV Series Scanning

For first time use you must Scan the root of the TV series as X3D will add some required files to the structure during the scan.

## Scanning in Media Library

Focus on the root folder 'TV Series' and press the 'Menu' button and the X3D will start the TV Series scan and display a busy icon while the scan progresses.

## Scanning from a Favourite Link

Focus on the Favourite Link 'TV Series' and press the 'Menu' button and the X3D will start the TV Series scan and display a busy icon while the scan progresses.

During the scan the App will add images and xml files automatically.

After the initial 'TV Series' scan you can scan the Series folder directly if required.

**Note: 'Season' folders cannot be scanned or edited.**

# Edit TV Series

X3D TV Series App has a built in TV Series Edit facility. The Edit facility is used to correct Series names that do not match the tvdb api name list and for Series that were incorrectly scraped. The Edit also offers facility to change the Fanart and TV Series posters.



## Search results screen

After you conduct a search, the results will be displayed showing a banner of all the matching TV Series. If there are multiple results then left and right arrows will be displayed and you can navigate all the search results by pressing the Right / Left Nav buttons. Focus on the correct TV Series and press 'Enter' and the images and info will be loaded onto the screen.



## Select Fanart Images

Use the Left / Right Navigation buttons to navigate the screen. When the Fanart background is highlighted in blue - press the 'Enter' button and a selection of available fanart images will be displayed. Navigate the fanart images with the Left / Right Navigation buttons and select the image you require by focusing on it and pressing the 'Enter' button.



## Select Movie Poster Images

Use the Left / Right Navigation buttons to navigate the screen. When the TV Series Poster cover is highlighted in blue - press the 'Enter' button and a selection of available TV Series posters will be displayed. Navigate the poster images with the Left / Right Navigation button and select the image you require by focusing on it and pressing the 'Enter' button.

# Rescan TV Series

When new content is added to the TV Series structure it is required that you re-scan the TV Series or the Series folder in order to build the new images and xml files. **Existing Episodes with matching 'episode.name.xml' files will not be re-scanned.**



# Subtitle Downloader

V3 supports subtitle download from <http://www.opensubtitles.org>

Play a movie and open the Subtitle screen. Select the 'Search' option. The Subtitle downloader will default to the GUI language and alternative languages can be selected via the language drop list. Select the Search icon and the results will be displayed. Select the Subtitle you require and it will be downloaded.



## Delete Subtitles

You can delete any external subtitle that was incorrectly downloaded. In movie play open the subtitle screen and focus on the subtitle you require to delete. Press the 'Edit' button on the remote and a 'Delete' dialogue screen will open.

## Move SRT Subtitles

In Video Play SRT subtitles can be moved up or down using the Navigation up/down buttons.

## WOL (Wake On LAN)

Setup Menu ---Misc --- WOL

**Browse the device/s first and then they should appear in the WOL list**

Select the devices you want X3D to wake up on boot - WOL on X3D boot-up is not always reliable due to the network not always being ready so X3D will also send the Magic Packets when you enter the Favourite Screen. You can also do a manual WOL in Setup Menu - focus on Device and press 'F1' button.



# IP STREAMING

The V3 firmware is equipped with the latest IP Streaming App functionality. IP streaming will allow you to stream content from the internet or share your videos and home video's via cloud services with family and friends who also own X3D'S. Flash type links (swf) and wmv links are not supported.

## IP Streaming m3u file details

You can make your own IP Streaming links and suggest you use Notepad++ as a text editor. The links are in a m3u format with a .iptv extension. Limit the amount of links per Genre - as too many links per Genre will slow the loading and working operation. Suggest up to +- 200/genre

```
#EXTM3U
#EXTINF:-1,name
http://ip/text
#EXTINF:-1,name
rtmp://text
#EXTINF:-1,name
mms://text
```

## Adding links to IP Streamer App

After making the link you can save it with any name. Navigate to this link in the X3D Media Library and select it and press Enter and it will be added to the IP Streamer App.

## IP Streamer App Details

Navigate to Internet Screen ---> IPTV Icon and select it. The App will open and you will see a Default Icon and custom Icons that you have added. Select a Icon and it will open and list all the channels names on the left menu. Select a channel to Play it.

## Player Functionality

- Menu - Open Close Menu Screen
- Info - Show name of current playing stream
- Stop - Stop the current playing/loading screen
- Chapter Skip F/B - Page advance on the Menu
- Nav Up - Play Previous Link
- Nav Down - Play Next Link
- Play/Pause - Play Pause the stream
- Return - Return to Icon Thumbnails

## Adding custom images to Thumbnails

You can add custom images for Genre Thumbnails -

Make a folder named 'iptv' and save your images to this. Images must be png type 17 x 172 pixels and name them IPTV\_GENRE\_name.png - name will be the actual name of your .iptv file. Copy the iptv folder to any Skin folder and do a 'Set to Skin' on the Skin folder. The iptv will be loaded into the X3D - when you add Genre's the thumbnail will show the corresponding image.

## Example of using DropBox as a Video Server

**Max Streaming length on DropBox is 15 Min**

DropBox link from **Public Folder** - <https://dl.dropboxusercontent.com/u/1234578/Test.mp4>

Remove the 's' from https

```
#EXTM3U
#EXTINF:-1,test1
http://dl.dropboxusercontent.com/u/1234578/Test.mp4
```



# HTML5 BROWSER

V3 has HTML5 browser functionality and you can take advantage of this by browsing sites that support HTML5. Most HTML5 pages do require a USB Keyboard Mouse for correct functionality.

## New Internet Browser Remote Control functions

Exit Browser - Stop Button

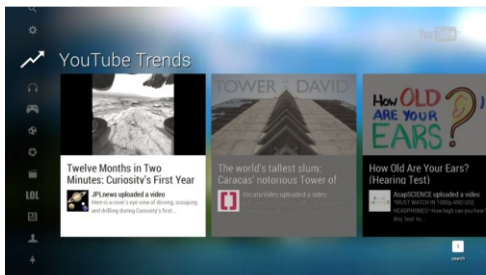
Zoom Video Full Screen - Info Button

## New USB Keyboard Commands

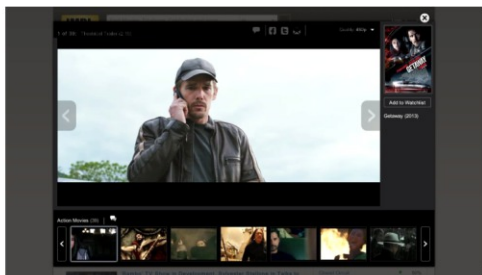
Exit - 'Ctr' 'quotation marks" - stop icon on Mede8er MEDX10KEY

Zoom - 'Ctr' 'Z'

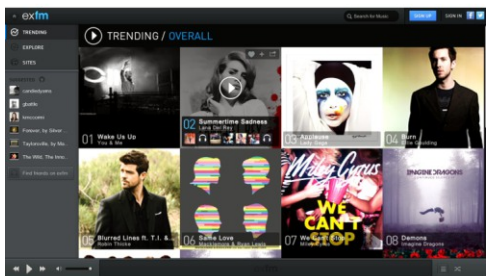
Zoom Video Full Screen - 'Ctr' 'i'



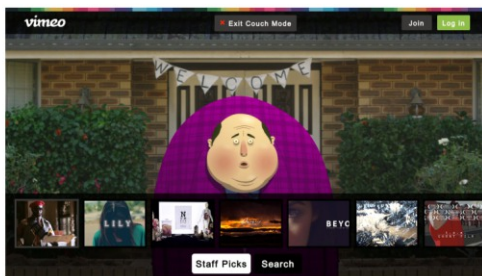
YouTube Fallback HTML5



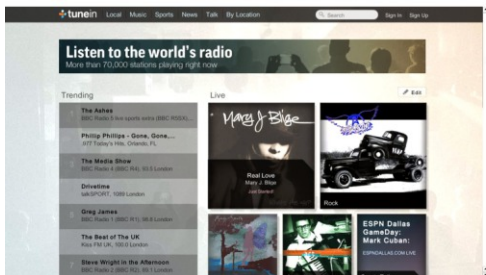
IMDB Movie Trailers



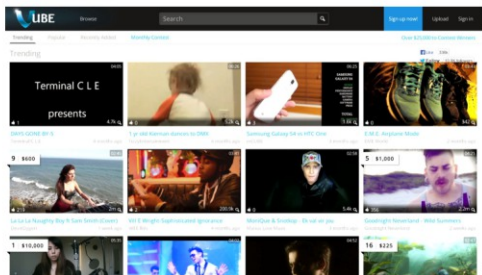
EXFM



VIMEO



TUNEIN RADIO



VUBE